



43 Franklin Street
East Hartford, CT 06108
860-289-8033 phone
860-289-8035 fax
www.signalservice.net

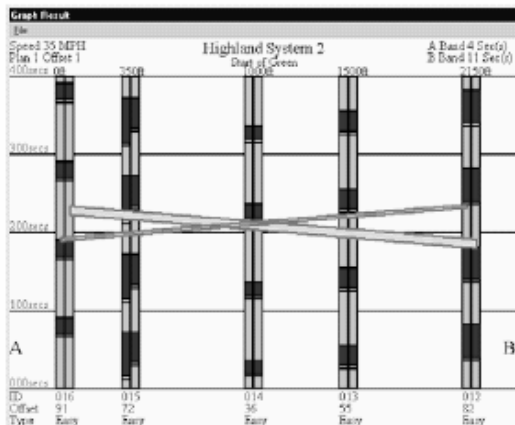
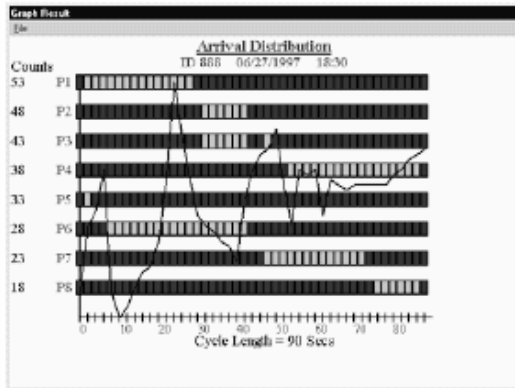
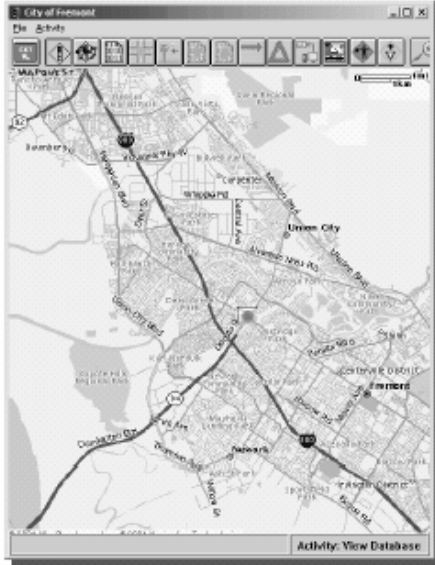
ITEM #



STREETWISE TRAFFICE MANAGEMENT SYSTEM

Features

- Multiple architecture, TCP/IP Client/Server Application
- NTCIP Center-to-Center and Central-to-Controller
- Automated Internet Web Page Generation
- Time-Space Diagrams
- Alarm Paging
- Incident Management
- Flexible Grouping of Controllers
- Detector Graphs, Output Files, and Arrival Distributions
- User-friendly Graphical Interface
- Inter-user messaging
- Database Uploading / Downloading
- Windows 95/98/ME/NT/2000/XP, or OS/2 Based
- GPS Protocol Support for Time Synchronization
- Synchro™ Import / Export & SimTraffic Support





43 Franklin Street
East Hartford, CT 06108
860-289-8033 phone
860-289-8035 fax
www.signalservice.net

ITEM #

STREETWISE TRAFFIC MANAGEMENT SYSTEM

TOPOLOGY

The following gives a list of architectural options for the StreetWise ATMS package. Note that the minimum system requires only one computer, which is capable of all database and communication access. StreetWise was designed to allow an agency to expand from one computer to an unlimited number of connections.

Clients

The StreetWise clients are native executables for the desired platform. StreetWise supports Windows 95/98/ME/NT/2000/XP and OS2. There is no limit to the number of clients.

Communication Server

The Communication Server handles all the input and output to the field devices. The Communication Server can provide up to 512 simultaneous connections. Also, up to 9,999 devices can be configured on any port.

Communication Equipment

The Communication Server has been designed to handle many types of communication media. Current implementations of StreetWise communicate through Radio, Fiber, FSK Modems, Cable TV, Dial-Up Modems, Direct and ISDN Modems. Any combination of equipment can be used with the Communication Server.

Field Devices

StreetWise controls a vast number of devices through the NTCIP or the Naztec Protocol. Currently supported devices; TS2, TS1, 170, 2070, Pagers, Pan/Tilt/Zoom Units, CMS, Real-Time Switches, and Incident Management Devices.

File Server

The File Server can be any network server that supports TCP/IP. Naztec, Inc currently has StreetWise installations using NT Server, Novell, Unix, and Banyan. The StreetWise database can store up to 9,999 field devices

Admin Server

An agency can setup a separate machine that can handle all Traffic Responsive and Adaptive operations with the field.

TMC Server

The TMC Server allows center to center NTCIP access to surrounding area Traffic Management Centers. Naztec, Inc has already implemented the TMC protocol into the StreetWise package.

Dial-In Access

Users can dial-in to a separate server or directly into the communications server. StreetWise supports PPP, the dialup Internet protocol, for access into the server. Remote users have all capabilities that the LAN users are provided.

Internet Access

StreetWise provides data in ASCII, HTML and GIF formats. By setting up a WEB Server and having StreetWise automatically generate web pages, data can be viewed by anyone in the world. System security can be setup ensuring that only data the agency wants to provide will be accessible.

Video Server

Separate equipment can be setup to provide projection maps and all client side data. In addition, windows of On-Street video can be viewed and controlled via the Communications Server.