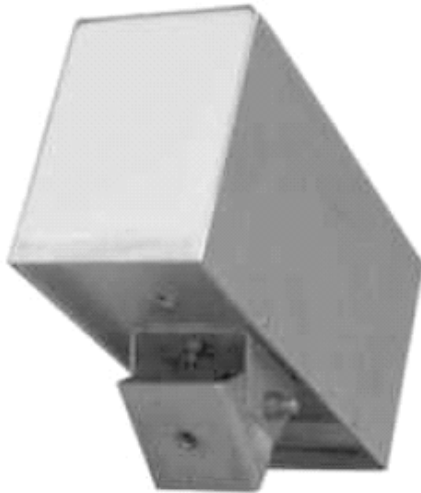





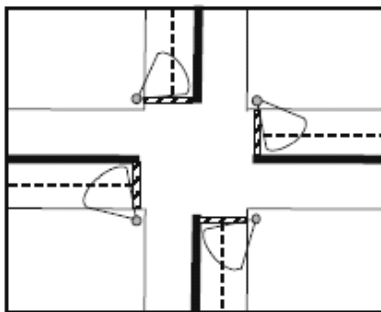
ACCUWAVE PRESENCE DETECTOR

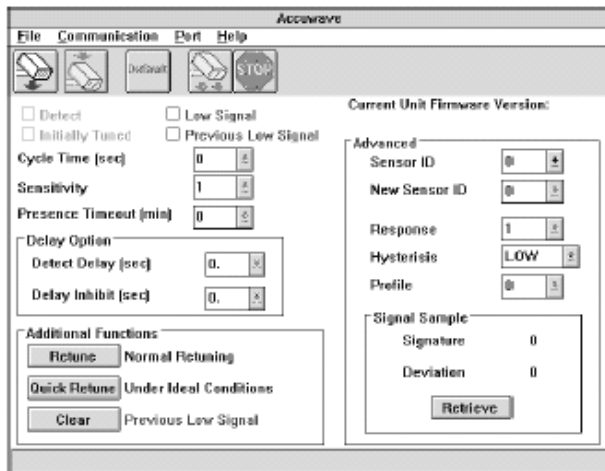
ACCUWAVE MODEL 150-LX

FEATURES

- True *PRESENCE* Detection
- Replaces loops and loop detectors
- Ideal for:
 - Stop bar call and extend
 - Advance detection on approaches
 - Actuated intersection and ramps
- Multiple lanes covered by single detector
- Easy pole-mount or overhead installation
- Eliminates cutting of streets required for loops
- Equally effective on gravel, asphalt, and concrete
- Self-tuning, auto-adjusts to changing conditions
- Operator programmable times for:
 - Delay
 - Retuning after continuous detection
- Relay or solid state output
- RS232 port for setup and monitoring



Installs on existing poles for most intersection applications





43 Franklin Street
East Hartford, CT 06108
860-289-8033 phone
860-289-8035 fax
www.signalservice.net

ITEM #

ACCUWAVE PRESENCE DETECTOR

SPECIFICATIONS

Model Number:	150 LX
Operating Frequency:	10.525 GHz (X-Band)
Vehicles Detected:	All licensed vehicles
Detection Range:	80 feet typical
Detection Pattern:	Elliptical (50 ft... x 25 ft.. typical @ 50 ft..)
Detection Mode:	Presence
User Adjustments:	Sensitivity, Delay, Response Time, and Retune after Continuous Detection
Communications:	RS-232 Port for setup and monitoring
Power Requirements:	95-135 VAC, 15 W
Solid State Output Ratings:	Optically coupled output rated at a maximum voltage of 30 VDC (collector output positive with respect to emitter output) with 50 mA maximum collector current. The output transistor saturation voltage is no more than 1.2 VDC.
Relay Ratings:	The relay contacts are rated at 3A maximum at 28 VDC and 120 VAC. Relay outputs are Form C, or SPDT.
Wiring Requirements:	7 conductor cables (8 if all three Form C relay contacts are used.) 4 conductor cables may be used in a minimal (no communication) installation.
Operating Temperature:	-40 ° F to +165 ° F, -40 ° C to +74 ° C
Weight:	5 lbs
Physical Dimensions:	5.5 in. high x 4.25 in. wide x 10.25 in. long